

Protecting Against the Active Assailant

This presentation is to be informative and not to promote specific products, services companies, etc. Illinois ASBO Sponsored Programs are permitted to promote products and services in accordance with the Service Associate Ethics Policy and Code of Conduct.

Introductions

Paul Timm, M.A., PSP (Speaker)

- Vice President, Facility Engineering Associates



Julie-Ann Fuchs, Ed.D., SFO, CSBO (Moderator)

- Associate Superintendent, Kaneland Community Unit School District #302



ILLINOIS ASBO ETHICS STATEMENT

This information is for the presenters only, please remove this slide before your presentation.

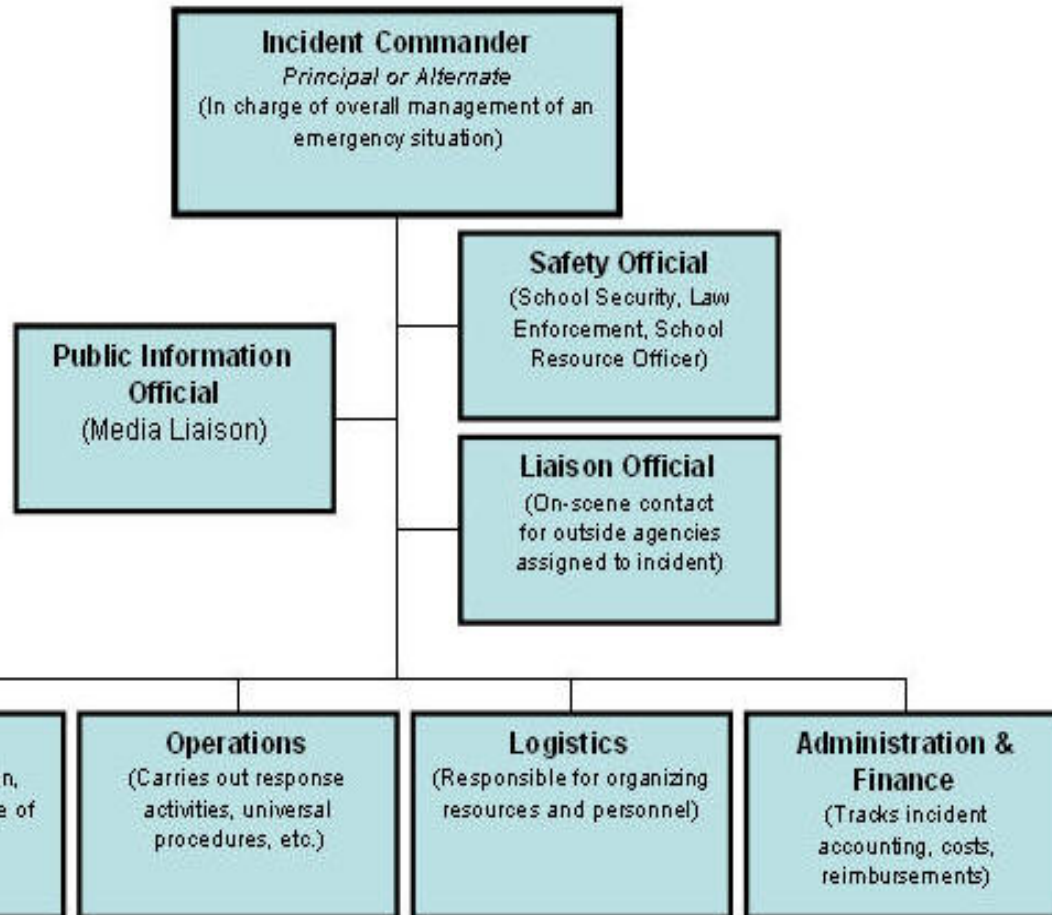
- The Moderator will help ensure the Illinois ASBO Code of Ethics is adhered to throughout the presentation and ensuing audience discussion.
- Moderators are given the authority to ask any attendee to leave if they become combative with presenters.
- This presentation is to be informative and not to promote specific products, services, companies, etc.
- If a vendor is a presenter and uses the presentation as a platform to “sell” their product or services, the Moderator has the authority to stop the presentation if the presenter refuses to modify their content.
- Any vendor presenter who violates these regulations may be excluded from presenting at future presentations.

Key #1 - Collaboration

- Top-Down Commitment
 - Example
 - Brick & Mortar
 - Documentation
 - NIMS
- Accountability
 - Performance Evaluation
 - Practices
- Mass Notification



Developing ICS



Staff Skills Survey & Inventory

Name & School _____/_____
Name School Room #

Please indicate the areas that apply to you.

PLEASE CHECK ANY OF THE FOLLOWING IN WHICH YOU HAVE EXPERTISE & TRAINING. CIRCLE YES OR NO WHERE APPROPRIATE.

- First Aid (current card yes/no) CPR (current yes/no) Triage
- Firefighting Construction (electrical, plumbing, carpentry, etc.)
- Running/Jogging/Physical Fitness Emergency Planning
- Emergency Management Search & Rescue
- Law Enforcement Bi/Multi-lingual (what language (s))
- Mechanical Ability Structural Engineering
- Bus/Truck Driver (CDL yes/no) Shelter Management
- Survival Training & Techniques Food Preparation
- Military Experience (current) (reserves/national guard yes/no)
- CB/Ham Radio Operator Journalism Camping
- Waste Disposal Recreational Leader

DO YOU KEEP A PERSONAL EMERGENCY KIT? _____
In your car? _____ In your room? _____

DO YOU HAVE MATERIALS IN YOUR ROOM THAT WOULD BE OF USE DURING AN EMERGENCY?
(i.e., athletic bibs, traffic cones, carpet squares, first aid kit, tarps, floor mats, etc.) _____ Yes _____ No

DO YOU HAVE EQUIPMENT OR ACCESS TO EQUIPMENT OR MATERIALS AT YOUR SCHOOL SITE THAT COULD BE USED AN IN EMERGENCY? _____ YES _____ NO
PLEASE LIST EQUIPMENT AND MATERIALS:

Key #2 - Awareness

- Culture
 - Briefings
 - Positive Incentives
- Staff Development
 - Security Education
- Prior Knowledge
 - “See Something, Say Something”



Key #3 – Involvement

- Youth & Early Adopters
 - Relationship
- Safety Initiatives
 - Instruction
 - Social Media
 - Surveys
 - Incentives



Active Assailant Procedures

- Lockdown
 - “Hard” / “Soft”
- Run, Hide, Fight



Classroom Security

- NFPA / ADA
- Security Concerns



Emergency Preparedness

- Communications
 - Public Address
 - Mass Notification
- Emergency Supplies
- Reunification
- Smartphone Apps
- Drills & Exercises



Security Resources

- ilschoolsafety.org
- dhs.gov/what-to-do-bomb-threat
- gallagherpost.com/gallagher_post/
- dhs.gov/active-shooter-preparedness
- youtube.com/watch?v=Xs5x7SBx3eQ
- youtube.com/watch?v=5VcSwejU2D0
- <http://training.fema.gov/EMIWeb/IS/IS100SCA.asp>
- about.usps.com/securing-the-mail/suspiciousmail.htm
- https://rems.ed.gov/docs/REMS_K-12_Guide_508.pdf



Questions and Answers

We thank you for your time!

Presenters:

Paul Timm, M.A., PSP (Speaker)

- *Vice President, Facility Engineering Associates*
(630) 776-5262, paul.timm@feapc.com

Julie-Ann Fuchs, Ed.D., SFO, CSBO (Moderator)

- *Associate Superintendent, Kaneland Community
Unit School District #302*
(630) 365-5111, ext. 71119, jfuchs@kaneland.org