

WHAT AN INTERMEDIATE UNIT CAN DO FOR YOU



PASBO 62ND ANNUAL CONFERENCE AND EXHIBITS, PITTSBURGH

March 2017

1

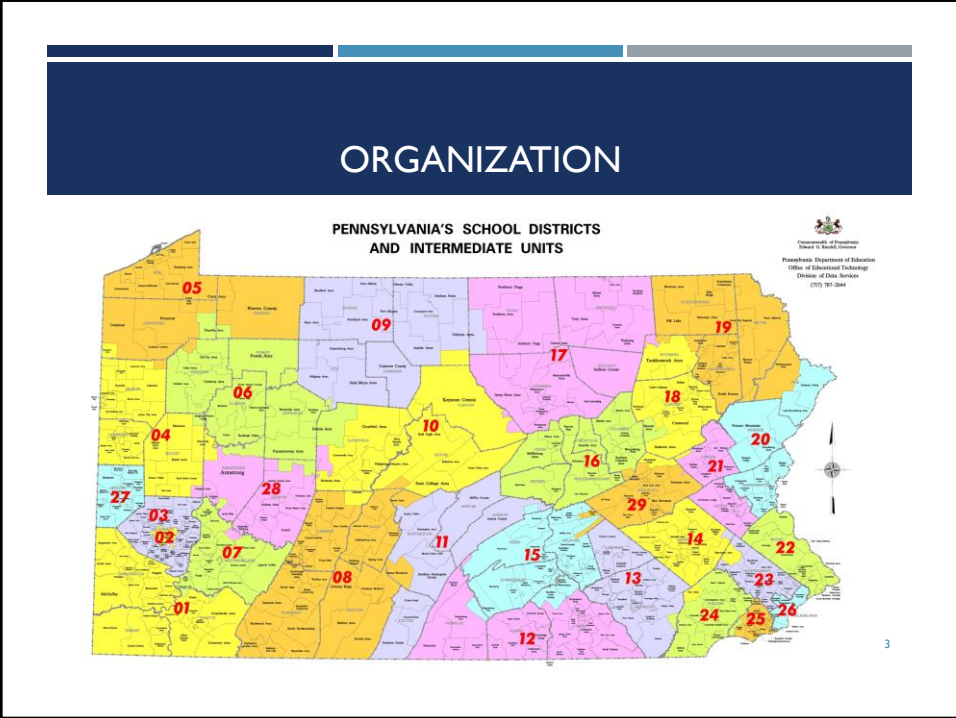
ORGANIZATION

- Act 102 of 1970 Created 29 Intermediate Units (IUs)
- Replaced 67 County Superintendents of Schools
- Every School District is assigned to an IU
- IUs are numbered 1 to 29 (generally from west to east)
- Most IUs represent multiple counties, exceptions in the Southeast
- Philadelphia and Pittsburgh School Districts are also IUs

PASBO 62ND ANNUAL CONFERENCE AND EXHIBITS, PITTSBURGH

March 2017

2



ORGANIZATION

IUs vary by geographic size, number of districts,
number of counties

| Intermediate Unit | Square Miles | Number of Districts | Number of Counties |
|-------------------|--------------|---------------------|--------------------|
| Allegheny #3 | 730 | 42 | 1 |
| Riverview #6 | 3094 | 17 | 11 |
| Appalachia #8 | 3479 | 35 | 4 |
| Lincoln #12 | 2100 | 25 | 3 |
| BLaST #17 | 3955 | 19 | 4 |
| Montgomery #23 | 482 | 22 | 1 |
| Delaware #25 | 210 | 15 | 1 |

PASBO 62ND ANNUAL CONFERENCE AND EXHIBITS, PITTSBURGH March 2017 4

A BRIEF HISTORY OF INTERMEDIATE UNITS

1971

Intermediate Units established
29 IUs replace 67 County Offices
Most programs state funded

1991

Special Education funding changed
Limited operating subsidy
Districts purchase services from IUs
IUs begin shift to entrepreneurial model

Today

State subsidy eliminated
Diversified service offerings
IU collaboration to build capacity
PDE partnerships
Leveraging Technology

PASBO 62ND ANNUAL CONFERENCE AND EXHIBITS, PITTSBURGH

MARCH 2017 5

PURCHASING CONSORTIA

- Health Insurance Consortia: 346 School Districts
- Energy Purchasing: 250 districts saved \$21 Million
- Supply Purchases: \$4.3 Million in Savings
- Expansion of Fixed Catalog Discounts Bids
- Fuel and Heating Oil Collaborative Bids
- Other Insurances, such as Life Insurance, Dental Insurance, etc.

PASBO 62ND ANNUAL CONFERENCE AND EXHIBITS, PITTSBURGH

March 2017 6

SHARED SERVICES – CREATING EFFICIENCIES

- Pupil Transportation: For an Estimated 15,000 students
- Substitute Teachers: Over 3,200 substitutes trained and placed in Classrooms around the Commonwealth
- Background Checks: Processed More than 47,000 Fingerprint Checks
- Driver's Education: Provided to 4,500 Young Drivers
- Shared Back Office Services: Including Transportation Administration, Payroll Support, Business Administration, and Other Related Supports

SUPPORTING EARLY CHILDHOOD EDUCATION

- Early Intervention
- Before & After School Child Care
- Pre-K Counts Programming
- Head Start and Early Head Start

Services are provided for over 50,000 children annually.

TEACHING & LEARNING: ONLINE LEARNING

IU Online Learning Opportunities for Students

23 IUs offering online courses

Nearly 4,000 courses

Over 10,000 students enrolled

Blended Learning support for 200 districts and
45 non-public schools

SERVICES TO SUPPORT SPECIAL EDUCATION

| Service | Students Served |
|--|-----------------|
| Autism | 3,500 |
| Multiple Disabilities | 3,000 |
| Occupational, Physical and/or Speech Therapy | 25,000 |
| Psychological Services | 11,000 |
| Vision Services | 1,640 |

PROFESSIONAL DEVELOPMENT

| Service | District/charter/non-public schools | Educators |
|-------------------------------|-------------------------------------|-----------|
| Instructional Technology | 600 | 9,000 |
| Curriculum Development | 550 | 9,500 |
| Teacher Evaluation Training | 540 | 15,000 |
| Principal Evaluation Training | 420 | 4,600 |
| Academic Standards | 579 | 14,300 |
| Assessment | 530 | 6,800 |

PASBO 62ND ANNUAL CONFERENCE AND EXHIBITS, PITTSBURGH

March 2017

11

OTHER PROGRAMS

- Career and Technical Centers
- Nonpublic Schools Act 89
- Technology Supports
- Migrant Education
- Homeless Education
- Literacy Training
- School Based ACCESS Program Services

PASBO 62ND ANNUAL CONFERENCE AND EXHIBITS, PITTSBURGH

March 2017

12

VALUE ADDED ASSISTANCE

- PIMS/Data Quality Supports
- IDEA Pass Thru Funds Compliance
- Job Alike Meetings/Workshops
- Facilitated Collaboration for New Initiatives
- HR Recruitment Fairs

QUESTIONS