

## **ACT 86 Data Reduction Advisory Committee**

**Presented by Committee Member Sidney M. Clark, PRSBA**

### **Areas of Focus**

- Legislation specifically mentions finance, human resources, food services, transportation, child accounting, athletics, health and special education
- No specific reference to general or commonly shared student information like demographics

### **Meetings**

- *August 25*
  - o Initial meeting with introduction of Committee members
  - o Committee purpose and expectations
  - o Scheduling of future meetings
- *September 14*
  - o Review of PDE data collections as a whole from PDE
  - o Review of Student Health-related submissions by PA Dept of Health and OCDEL (Office of Childhood Development and Early Learning)
  - o Review Human Resource submissions from PDE and BSLTQ (Bureau of School Leadership and Teacher Quality)
- *October 14*
  - o Review of Student general demographic data collected for use by all other collections by PDE Center for Data Quality
  - o Review of Child Accounting from PDE Bureau of Budget and Fiscal Management
  - o Review of Special Education from PDE Bureau of Special Education
    - Mention was made of duplication of discipline data submitted for Special Education and Safe Schools.
  - o Review of Early Intervention Services from OCDEL
- *November 10*
  - o Scope expanded to include SAP (Student Assistance Program) and AEDY (Alternative Education of Disruptive Youth) in regards to identifying duplication of data collected
  - o No formal presentation on Safe Schools, but it was questioned by committee

- Mention was made of duplication of discipline data submitted for Special Education and Safe Schools.
  - Review of Food Service data submissions through online data collections and paper forms from PDE Division of Food and Nutrition
  - Review of Transportation by PDE Division of Data Subsidy and Administration
  - Review of SAP from Joe Loccisano and Eugene Breault
  - Review of AEDY from Ryan Korn
- *December 6*
  - Review of Athletic Submissions from Steve Fischer and Monica Washington
  - Review of School Finance Data Submissions via electronic and paper from (BBFM) PDE Bureau of Budget and Fiscal Management
  - Review of School Finance Data Submissions from OCDEL
  - Review of IU Financial Data Submissions from Debbie Reeves and Dave Ream
  - Review of preliminary draft of the Committee’s Report

### **Findings and Recommendations That Must Cease**

- *Discipline Reporting* – PDE must streamline the collection of discipline reporting into one uniform collection both for state and federal reasons the data is collected.  
  
PDE noted that prior to 1997 there were 186 data elements just for special education. Currently there are 49 data elements collected just for special education. With this elimination of a duplicated data submission, this number will continue to decrease.
- *Incarcerated Juveniles Reporting* – PDE must move this collection into the annual AFR collection since this same data is reported within AFR. This would affect the timing of the funding, but is minor and should not have any major effects. This should be in effect beginning with the 2018-19 AFR.

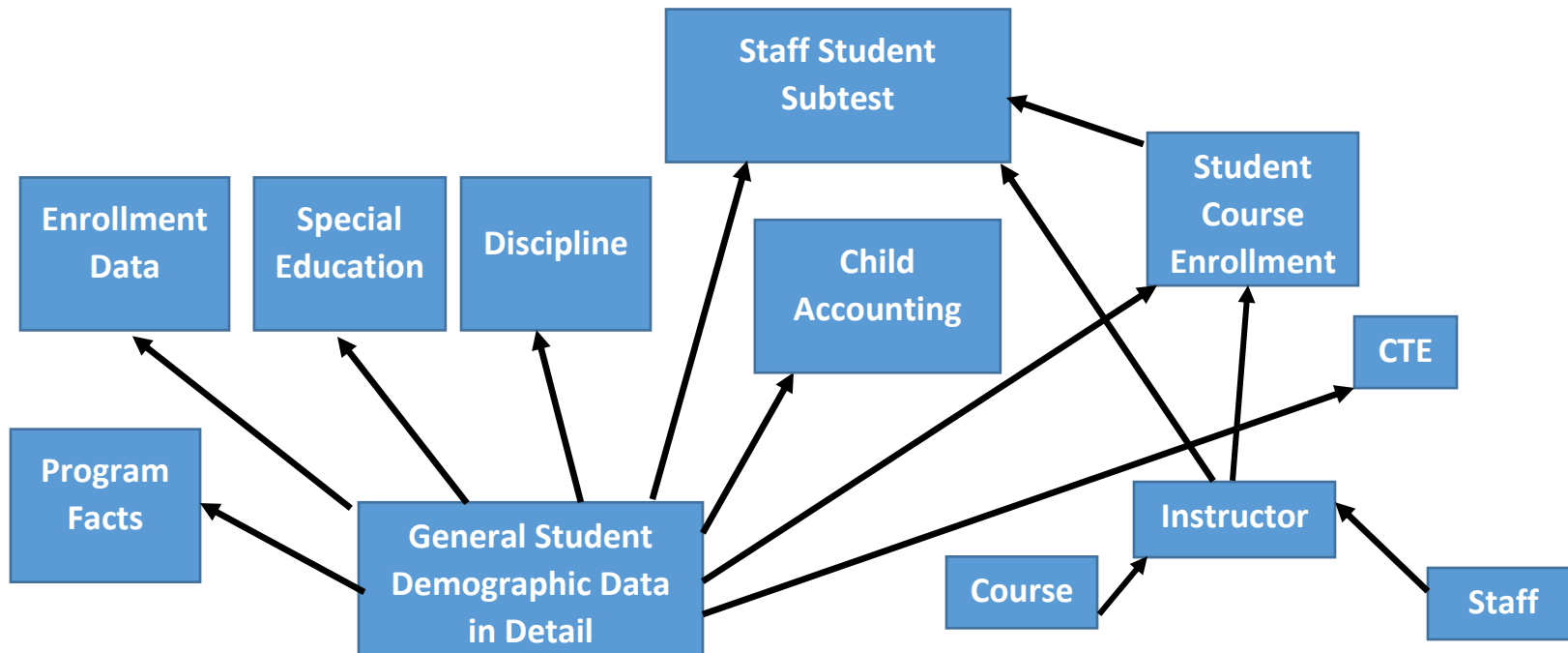
### **Findings and Recommendations for Consideration by PDE and General Assembly**

- *Pre-population/Look-up tool for common Student Data in PIMS for use by non-PIMS collection tools* – PDE is to research the costs and functionality of providing a web-based tool that allows non-PIMS collections to access the common Student Data needed for their specific collections without violating privacy issues. Too much time is spent repeatedly entering this same common student information in every non-PIMS data collection. The General Assembly is to consider funding the development and implementation of this project to create the efficiencies needed within the LEAs and IUs.

## STUDENT RECORDS REPORTING TO PDE (DETAIL RECORDS)

Various detail and summary reports as needed for each data submission  
(This programming for reports is done in one place for PDE  
instead of done on individual school district systems)

## COGNOS REPORT



## PIMS SUBMISSIONS (eSCHOLAR)



**STUDENT RECORDS REPORTING TO PDE (SUMMARY RECORDS)**

Various detail and summary reports as needed for each data submission  
(This programming for reports is done in one place for PDE  
instead of done on individual school district systems)

**COGNOS REPORT**

District  
Fact

District  
Snapshot

Safe Schools  
Limited English Proficiency  
Title I  
Title III  
Support Personnel

Home Education and  
Private Tutoring  
AEDs  
Interscholastic Athletic  
Opportunities  
PATI Survey

Location  
Fact

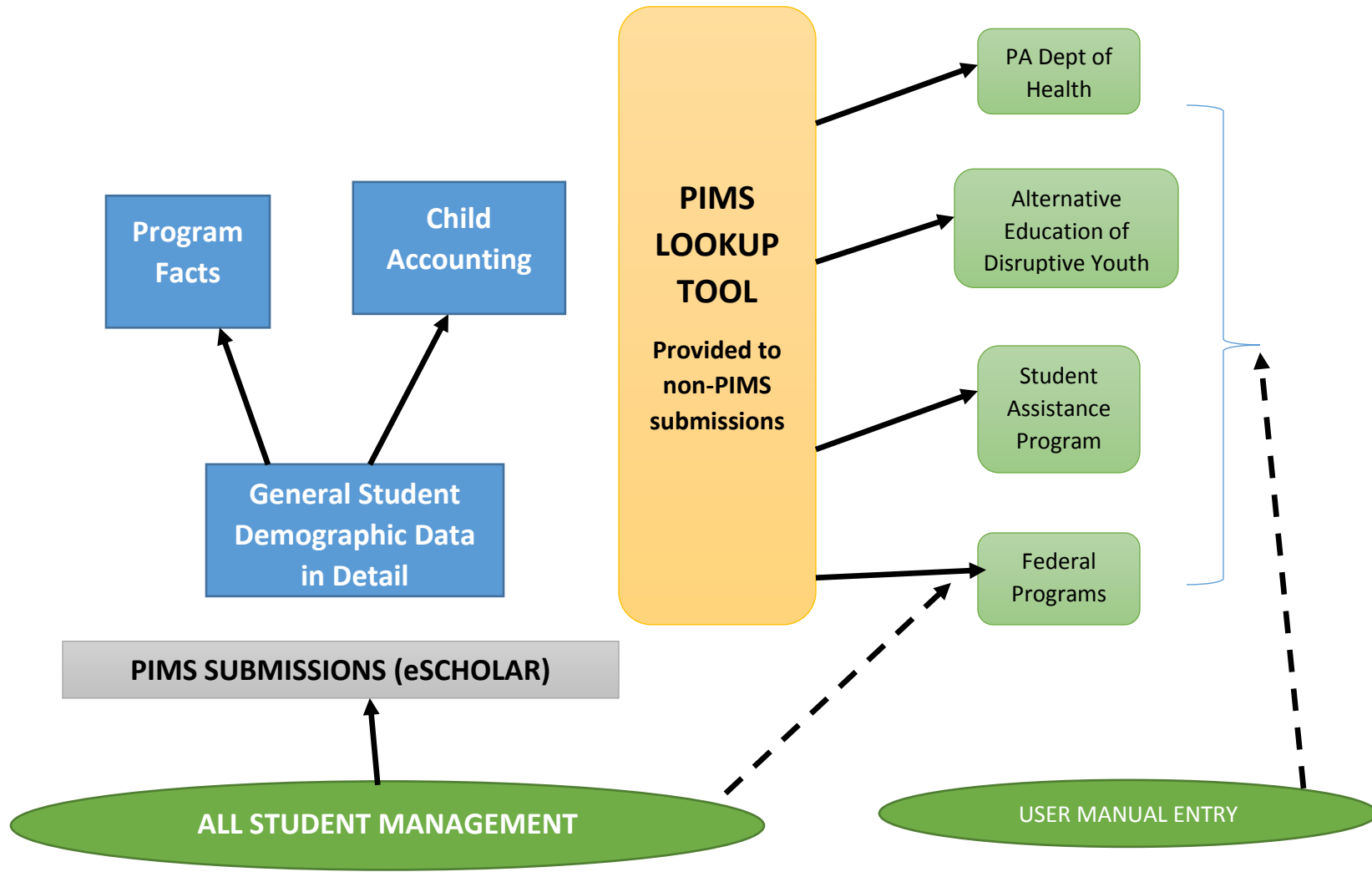
Survey  
Participant  
Response

**PIMS SUBMISSIONS (eSCHOLAR)**

PDE Generated  
Excel Spreadsheets

ALL STUDENT MANAGEMENT SYSTEMS

# PIMS LOOKUP TOOL FOR NON-PIMS SUBMISSIONS



- *Continue the Established Data Protocol in Evaluating New Data Submissions* - All new data submissions under consideration should go through a feasibility review of being submitted through PIMS using the protocols already in place to avoid the creation of new data collection methods that can produce the duplication of effort that Act 86 was passed to eliminate.

MyPDESuite Application

Applications
User/Group Admin
View/Join Groups
Profile
Help & Support
Log Out

You are currently authorized to access the following PDE applications. Click on the desired Application Abbreviation to open the application in a new window. If your browser has a pop up blocker please make sure that it is disabled.

Application Abbreviation	Application Name	Info	Status
<a href="#">Act80</a>	Act80	ⓘ	
<a href="#">CAD</a>	CAD	ⓘ	
<a href="#">CATSv2</a>	CATSv2	ⓘ	
<a href="#">CFRS</a>	CFRS	ⓘ	
<a href="#">CompPlan</a>	CompPlan	ⓘ	
<a href="#">DriverEd</a>	DriverEducation	ⓘ	
<a href="#">EdNAv2</a>	EdNAv2	ⓘ	
<a href="#">eTran</a>	eTran	ⓘ	
<a href="#">FAI</a>	FAI	ⓘ	
<a href="#">LEP</a>	LEP	ⓘ	
<a href="#">PAsecureID</a>	PAsecureID	ⓘ	
<a href="#">PERMS</a>	PERMS	ⓘ	
<a href="#">PIMS</a>	PIMS	ⓘ	
<a href="#">PIMS_Sandbox</a>	PIMS_Sandbox	ⓘ	
<a href="#">PIMSReports</a>	PIMSReports	ⓘ	
<a href="#">RES</a>	RES	ⓘ	
<a href="#">SSR</a>	SSR	ⓘ	
<a href="#">TIMS</a>	TIMS	ⓘ	

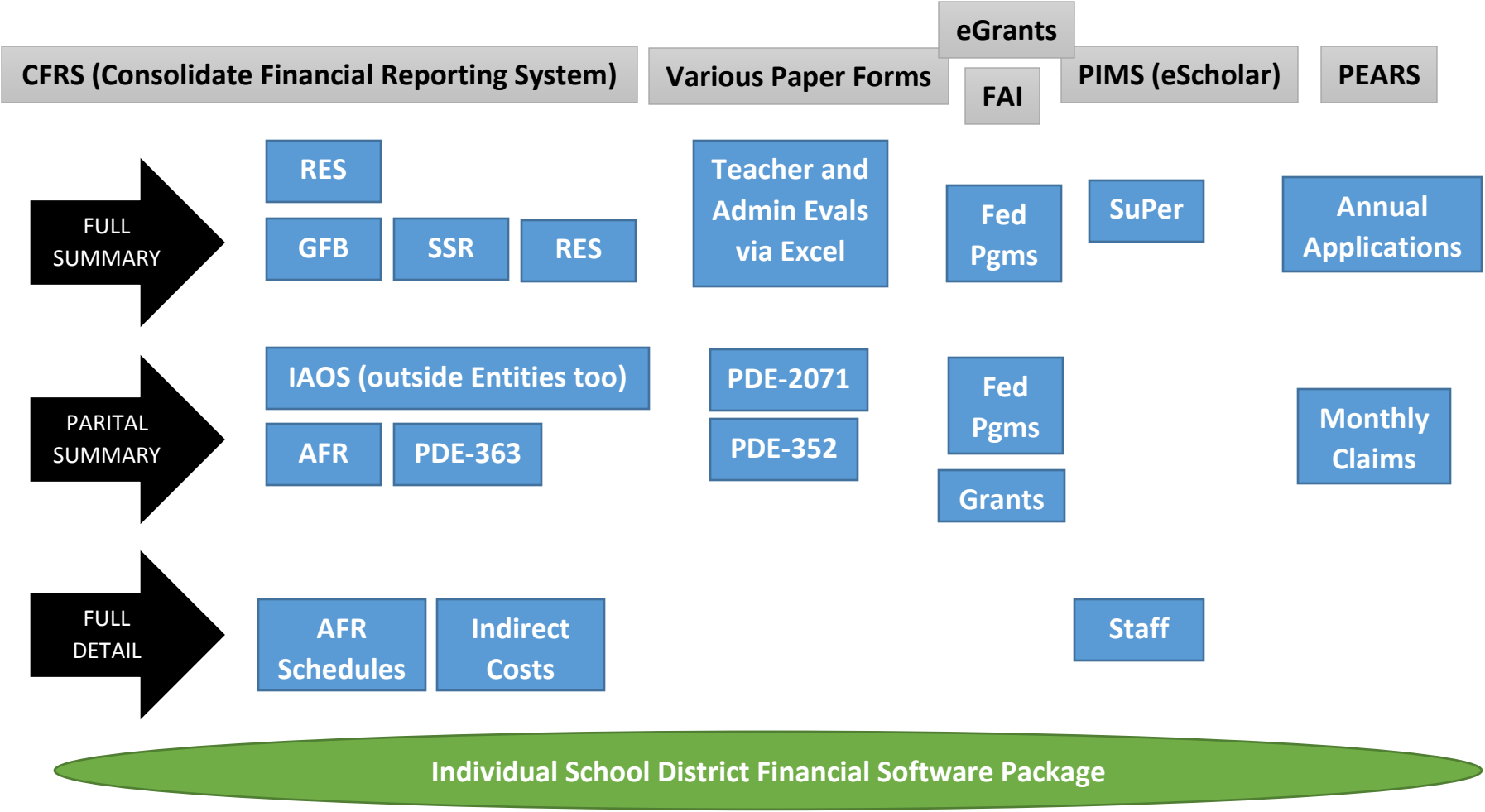
**Icon Key:**

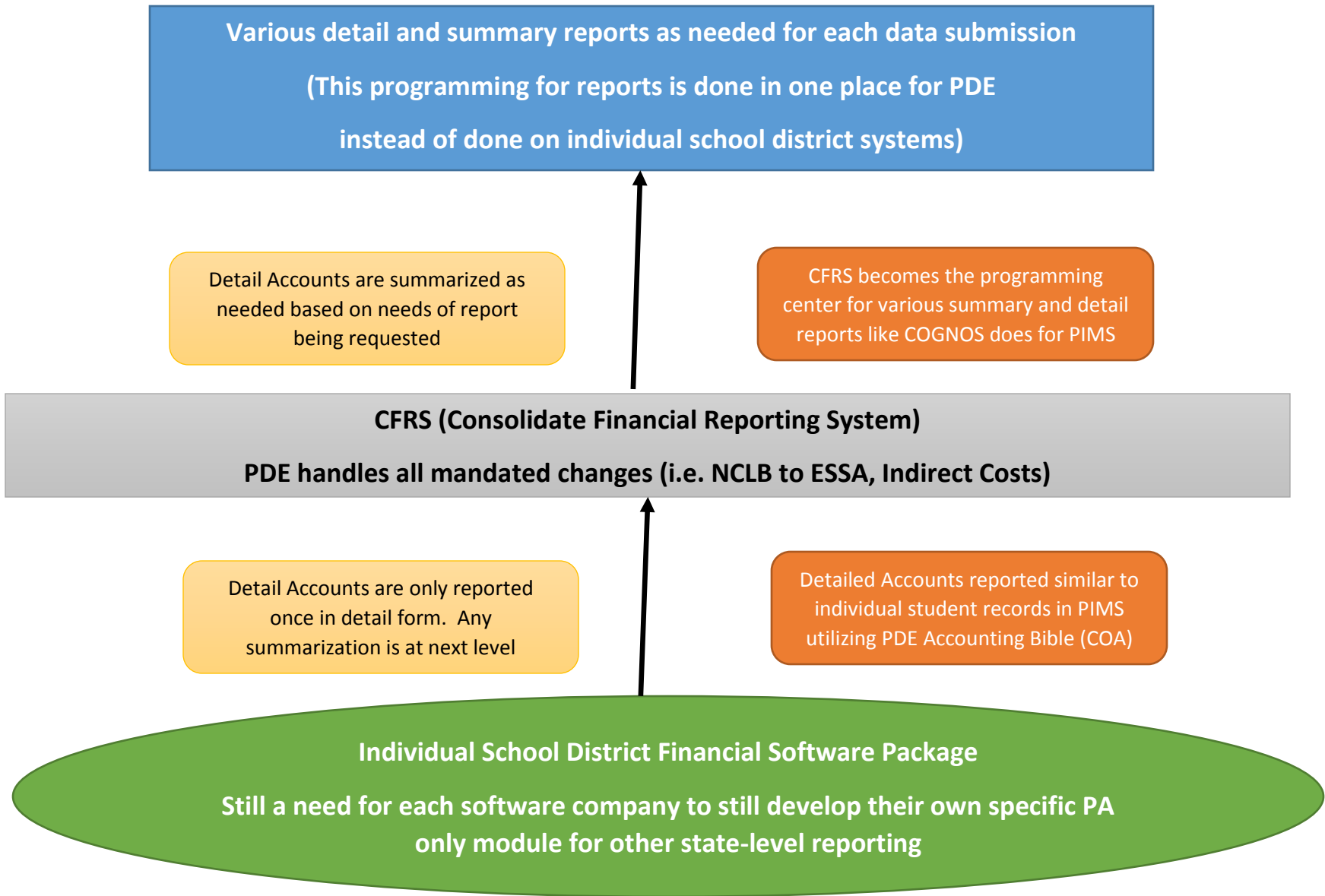
- ⓘ Open the information page for this application
- ⓧ This application is not currently available
- ⚠ This application is not available via your current network connection

This is the list of applications I have access to for my district. This does not include eGrants, AEDY, SAP, Safe Schools, Department of Health, PEARS.

- *Consolidated Financial Reporting System Future Enhancements* – CFRS collects financial data in various summary forms for different purposes. CFRS should be modeled more like PIMS in where more detailed records are collected from the LEAs and IUs and the summary functionality needed for the reports needed be programmed and managed at the CFRS program level.

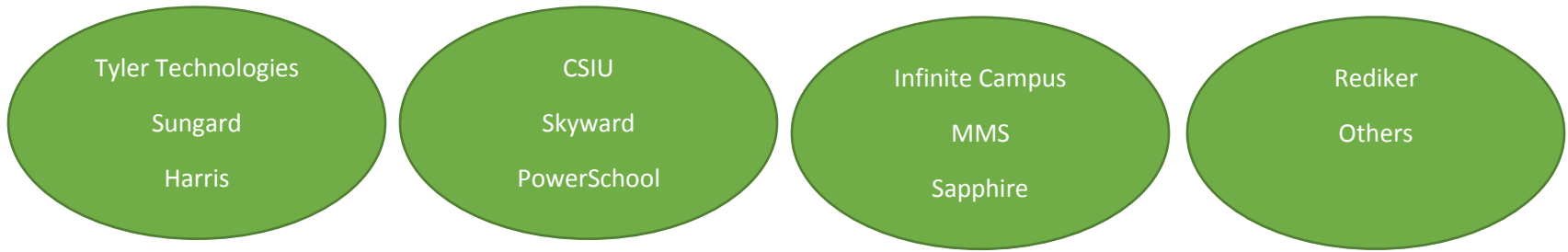
**Various detail and summary reports**  
 (This programming for reports is done at the District Level within each financial software package either by the company or the district themselves)  
 Does not count Dept of Rev Reports or PSERS



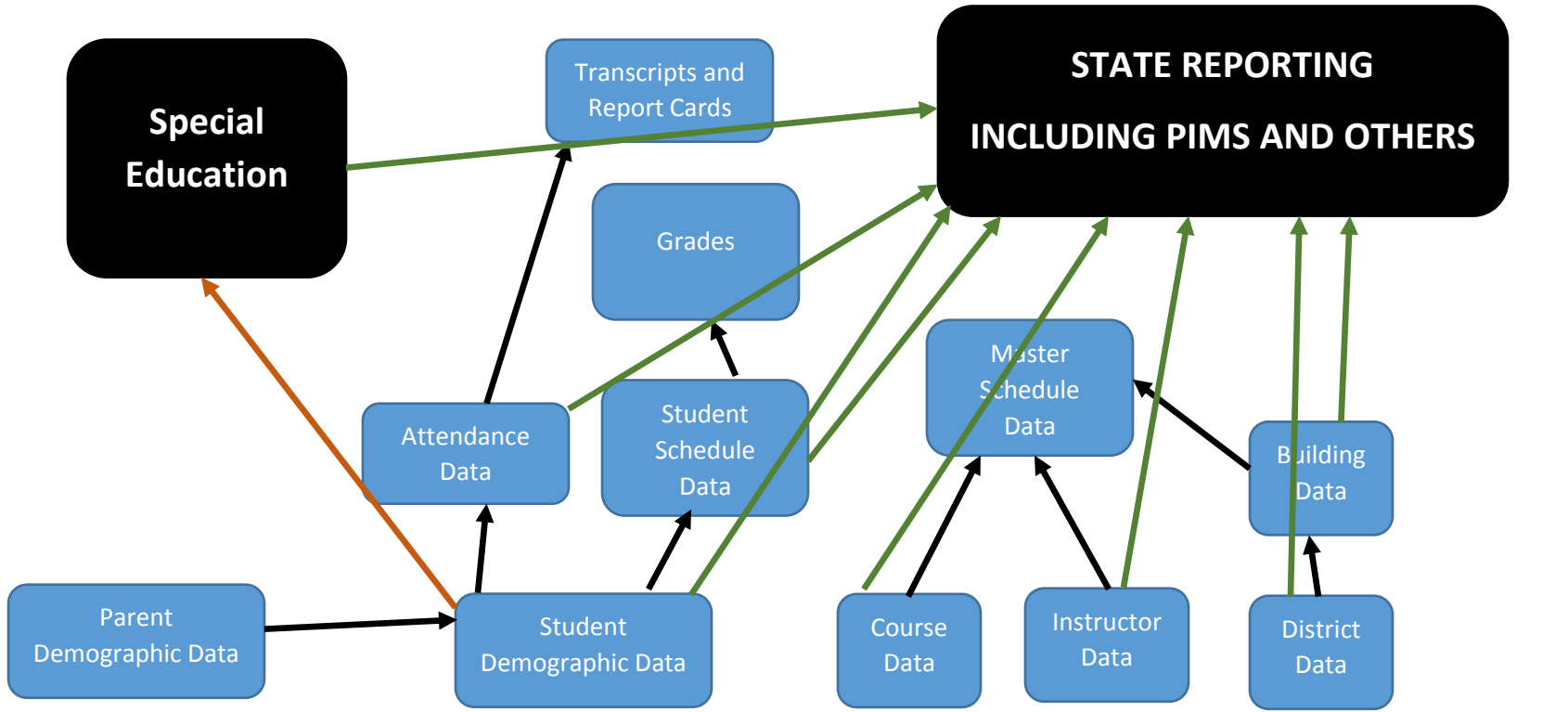




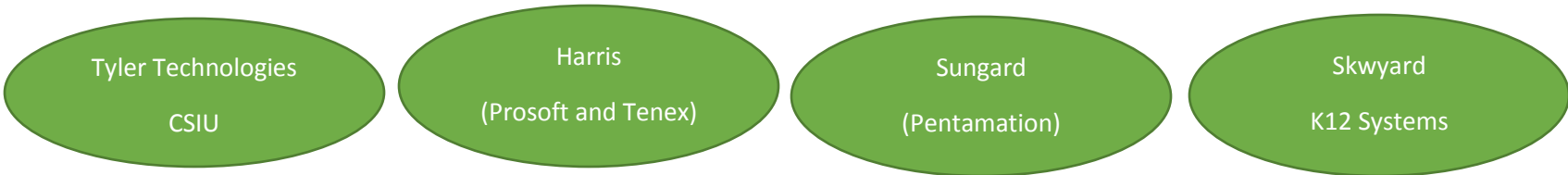
- *Continue Funding for Technical Support for PIMS* – PDE and the General Assembly should continue funding the technical assistance for PIMS provided to all entities.
  
- *Elimination of all Paper-Based Reports still being submitted to PDE* – Even with today’s methods of collecting data electronically from LEAs and IUs, there are still a number of paper submissions. PDE should prioritize these submissions in order of the number of entities affected and implement new electronic forms of submission.
  
- *Interscholastic Athletic Opportunities* – This new report created 3 years ago. The side effects of this reporting may outweigh the benefits of the report. The General Assembly should determine whether the reporting is relevant to the goals of the original legislation and should be continued or eliminated.
  
- *Statewide Student Records (SIS) and Financial Management software* – Countless hours and money are spent by multiple software companies to implement a single change to PIMS reporting or financial reporting to the state. PDE should prepare an overview of costs and considerations for a standard software system to be used by all LEAs and IUs for student records and financial software. The General Assembly should consider funding the purchase and ongoing maintenance costs of utilizing these two state-wide software packages to eliminate duplication of state-specific reporting by multiple software companies that pass this costs along to the LEAs and IUs. This allows for consistent training sessions for all LEAs and IUs.



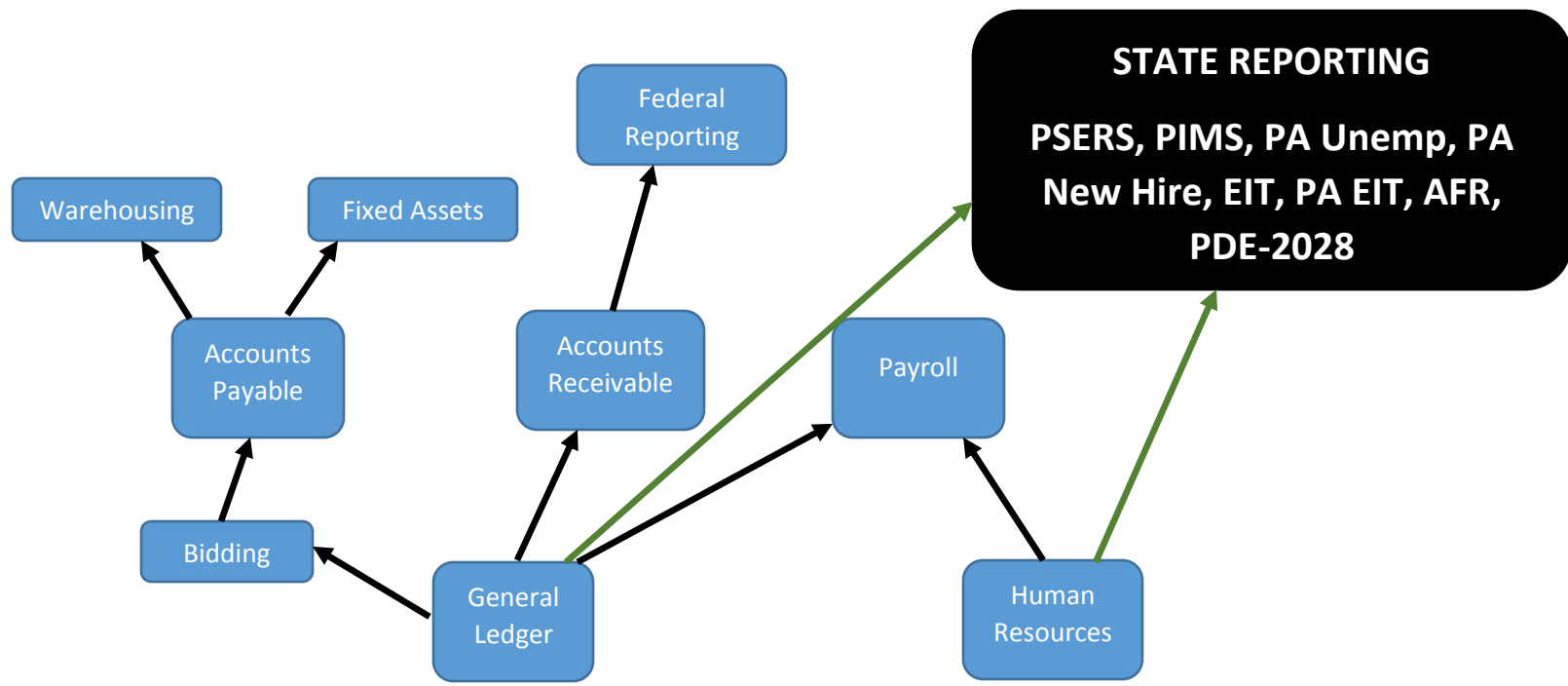
**STUDENT RECORDS SYSTEM (SIS)**



BLACK – Common Software Functionality   
 BROWN – State and Federal Software Functionality   
 GREEN – State Software Functionality



**FINANCIAL MANAGEMENT SYSTEM**



BLACK – Common Software Functionality    GREEN – State Software Functionality